

The "Lovely" Collection

wedding lightroom presets



SHAE ESTELLA
PHOTO





Introduction

Congratulations! I am so happy that you have my first preset collection in your hot little hands and I would love to see your work with the presets so make sure you #estellapresets when you post on social media!

Remember to join the 'Estella Preset Community' group on facebook too so we can help each other and show off our work with the presets.

I personally use this preset collection with my work so I hope they are as efficient, artistic and easy to use as they are for me. Before you get started, please read through this handbook for descriptions and examples of each preset and to get a feel for how to edit with them. My inspiration with this set of presets was to create something artistic but also easy to manipulate. However there is an important note to remember when using the preset collection:

As with all presets, you need to make sure you have a good base to start with. Good exposure and good lighting is a must. You can not expect one click of these (or any) preset to fix a terribly exposed or harsh light image into something amazing. I did design these though to work for a full wedding day, as I too experience all sorts of bad lighting so there are a few things you can do to improve the image (eg. Adjust contrast, highlights, shadows, whites and blacks where need be to soften a harsh light image).

shae x



@estellaphoto



Shae Estella Photo

Tweaking Tips

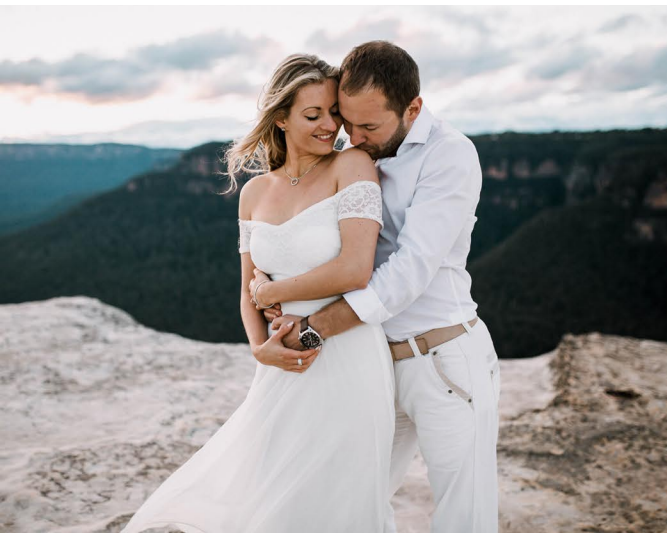
LVY 01

This is my standard go-to preset for my work. It is easy to use and right away adds some 'punch' to the image whilst keeping clean skin tones.

I like to push my warmth in the white balance up for most images with this preset.

If the blacks/shadows are too dark, I find increasing the blacks works best.

If you want to warm the image up some more, use Split Toning and place with the saturation (this is set to 0).



SHAE ESTELLA
PHOTO



Tweaking Tips

LVY 02

This preset is an extension of LVY 01, for those wanting to create a more dark and moody finish to the image. It's punchy, contrasted and daring to play with!

Tip: If you find your images is too dark, bump up the exposure and blacks.



SHAE ESTELLA
PHOTO



Tweaking Tips

LVY 03

This preset is the most bright and colourful of the collection. Perfect for harsh back lit sun/sunsets or where a pop of colour is needed.

Tips: Minimum tweaks required for this lovely preset, adjusting the orange saturation and luminance in HSL should be enough! If you want brighter greens in this preset, simply bump up the yellow saturation in HSL.



SHAE ESTELLA

PHOTO



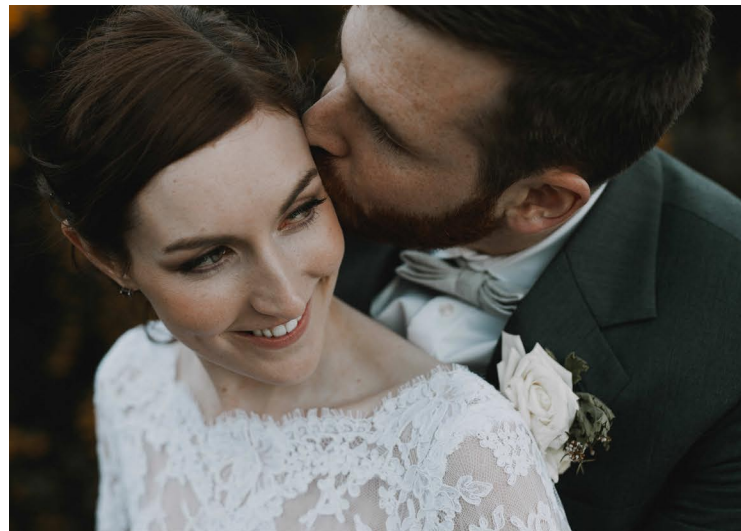
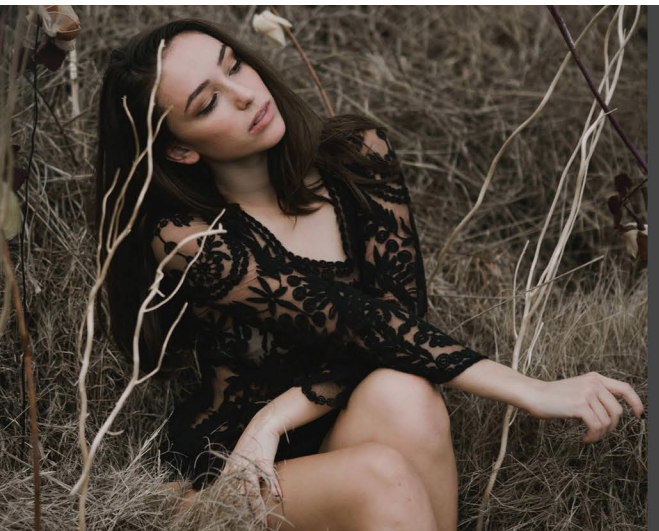
Tweaking Tips

LVY 04

This is a lovely soft preset with a cinematic feel. Best used on days where there is harsh light prominent or to create something a little more moody.

Tip: Use a warm white balance and reduce the exposure for those dark and moody images.

This preset is great for evening out skin tones that are quite contrasted.



SHAE ESTELLA
PHOTO

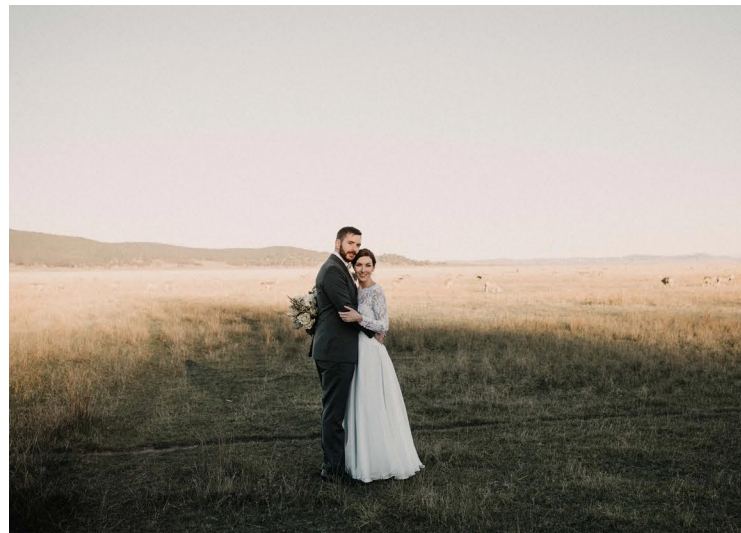


Tweaking Tips

LVY 05

This preset is for those golden, warm image loving photographers! It balances blue toned images nicely and gives the image an artistic feel.

Adjust the highlights in the split tone tab down or up depending on your preference to how much warmth you want.



SHAE ESTELLA
PHOTO



Tweaking Tips

LVY B/W 01

Bright highlights and great contrast for clean black and white images. Adjust the exposure and contrast to soften the image if needed.



SHAE ESTELLA
PHOTO



Tweaking Tips

LVY B/W 02

This preset has muted highlights and soft shadows. Great for bright images through to soft light situations. To make the image more moody, or brighter simply play and adjust the exposure and contrast.



SHAE ESTELLA

PHOTO





Installation

Installing Lightroom Presets:

1. Unzip the “Estella Presets LVY Collection” zip folder that you downloaded.
2. Locate your “Develop Presets” folder by going to your Lightroom preferences, click on the ‘Presets’ tab, and then click on “Show Lightroom Presets folder”. Inside that folder will be the “Develop Presets” folder.
3. Drag/Copy + paste the “Estella Presets” folder into the “Develop Presets” folder.
4. Restart Lightroom and it should appear!

Remember to join the “Estella Presets Community” on facebook and share your images with the growing group!
Shae xo.