

## Pretty Presets Important Information:

- ◇ Terms of Use - page 1
- ◇ Installing Presets - page 1
- ◇ Installing Brush/Filter Presets - page 2
- ◇ Installing Export Presets - page 3
- ◇ Speed Bumps - page 3



## Terms of Use

You may only use these products for personal or professional use.

This license extends to the single, individual purchaser. This license does not extend to companies or partnerships and may not be resold, loaned, and/or gifted to another individual and/or party.

You may not share, loan or redistribute/sell or copy any of these files in any way.

All presets by Pretty Presets are copyright protected.

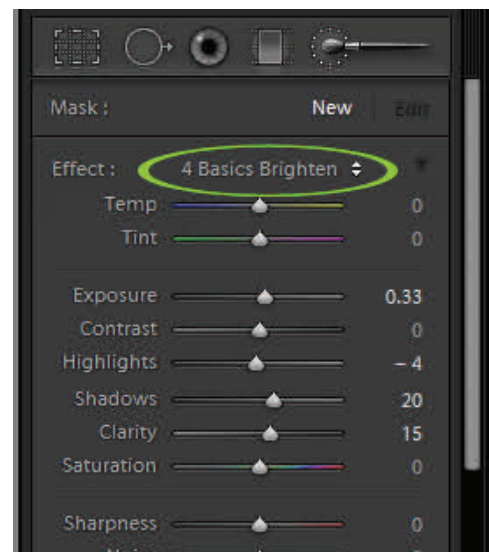
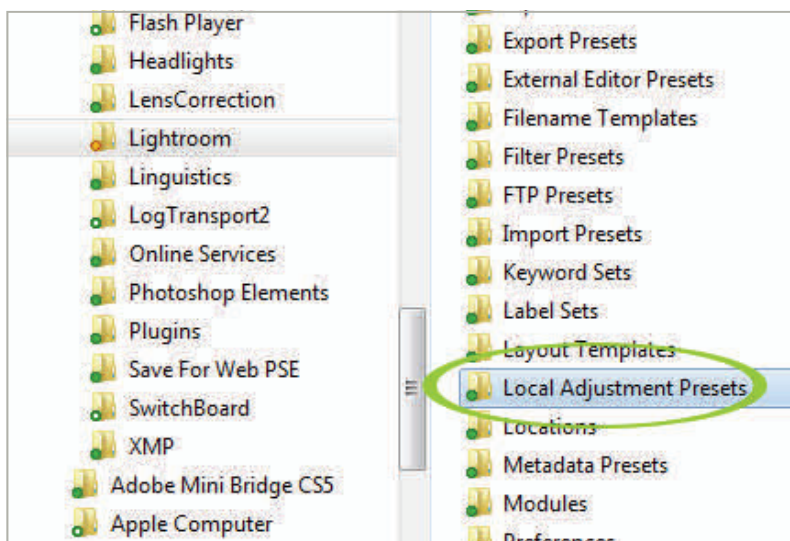
## How to Install Presets in Lightroom 2, 3 and 4

1. Click the link to download your preset packet (page will open up after purchase and/or you will be sent an email with a link to follow to download).
2. Choose a location on your hard drive to SAVE the zip file. You need to be able to access the location again, so make sure you know the file path to the folder.
3. After download is complete, go to the zip file (if your download window is open you can right click and choose 'open containing folder').
4. Right click (or double click on a Mac) on the file and choose 'Extract All Files.' If this option does not open the file see "Possible Speed Bumps" on page two.
5. Click on the folder that holds the set of presets and press 'control' and 'c' ('command' and 'c' on a Mac) to **copy the folder**.
6. Open your Lightroom program.
7. PC users— go Edit in the top menu, then to Preferences. Mac users - click on Lightroom word (top-left corner of screen), then to Preferences.
8. In the Preferences menu, click on the Presets tab, then click on "Show Lightroom Presets Folder" button.
9. When your Windows Explorer or Mac Finder opens up, double click on the Develop Presets folder.
10. Press 'control' and 'v' ('command' and 'v' on a Mac) to paste in the preset folder.
11. Restart your Lightroom program and the presets will now show up under the Preset panel in the Develop module.

## How to Install Brush Presets in Lightroom 2, 3 and 4

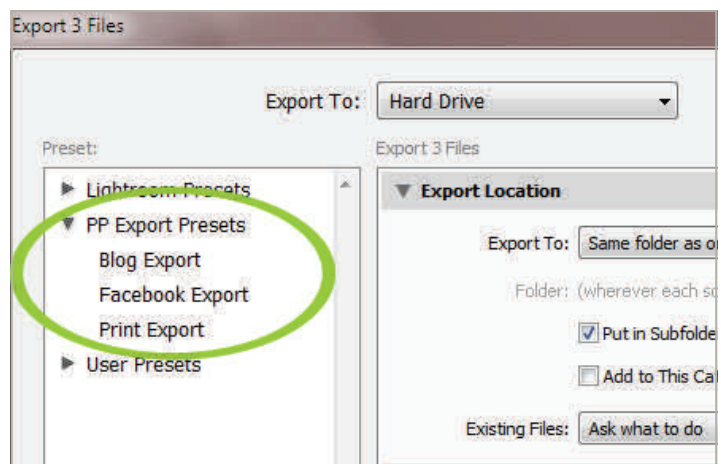
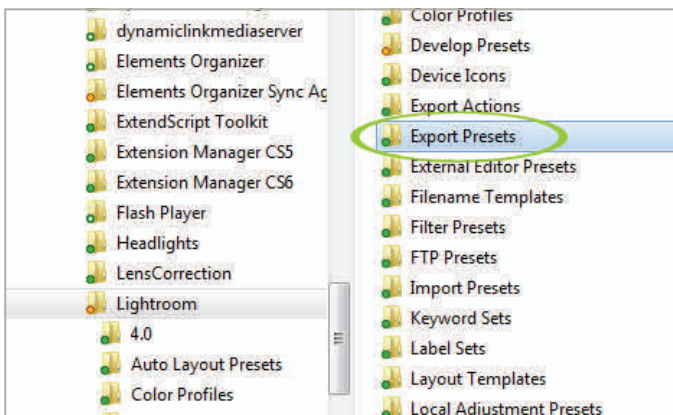
1. Click the link to download your preset packet (page will open up after purchase and/or you will be sent an email with a link to follow to download).
2. Choose a location on your hard drive to SAVE the zip file. You need to be able to access the location again, so make sure you know the file path to the folder.
3. After download is complete, go to the zip file (if your download window is open you can right click and choose 'open containing folder').
4. Right click (or double click on a Mac) on the file and choose 'Extract All Files.' If this option does not open the file see "Possible Speed Bumps" below.
5. Click INTO the folder that holds the set of brush/filter presets and highlight all of the .lrtemplate files and press 'control' and 'c' ('command' and 'c' on a Mac) to copy the files.
6. Open your Lightroom program.
7. PC users— go Edit in the top menu, then to Preferences. / Mac users - click on Lightroom word (top-left corner of screen), then to Preferences.
8. In the Preferences menu, click on the Presets tab, then click on "Show Lightroom Presets Folder" button.
9. When your Windows Explorer or Mac Finder opens up, double click on the Local Adjustment Presets folder.
10. Press 'control' and 'v' ('command' and 'v' on a Mac) to paste in the preset files.
11. Restart your Lightroom program and the brushes/filters will now show up when you go to those tools and click on the word that is to the RIGHT of the word Effect.

Watch a short [video tutorial](#) on how to install Pretty Preset's custom Lightroom brushes.



## How to Install Presets in Lightroom 2, 3 and 4

1. Click the link to download your preset packet (page will open up after purchase and/or you will be sent an email with a link to follow to download).
2. Choose a location on your hard drive to SAVE the zip file. You need to be able to access the location again, so make sure you know the file path to the folder.
3. After download is complete, go to the zip file (if your download window is open you can right click and choose 'open containing folder').
4. Click on the folder that holds the set of export presets and press 'control' and 'c' ('command' and 'c' on a Mac) to **copy the folder**.
5. Open your Lightroom program.
6. PC users— go Edit in the top menu, then to Preferences. Mac users - click on Lightroom word (top-left corner of screen), then to Preferences.
7. In the Preferences menu, click on the Presets tab, then click on "Show Lightroom Presets Folder" button.
8. When your Windows Explorer or Mac Finder opens up, double click on the Export Presets folder.
9. Press 'control' and 'v' ('command' and 'v' on a Mac) to paste in the preset folder.
10. Restart your Lightroom program and the presets will now show up on the left side of the Export Menu.



## Possible Speed Bumps

Cannot get the zip file to unzip? If right clicking does not offer "extract files" and double clicking on the file doesn't open it up, then you may need to download an external program to unzip. We recommend trying [WinRar](#), a free unzipping program.

Presets are not showing up? You probably need to shut down your Lightroom and restart again.